



Cyclone Centrifugal Pumps

HEAVY DUTY PUMPS FOR CIRCULATION SOLUTIONS

Featuring

- Flows up to 29 GPM (110 LPM)
- Long life DC motor
- Anti-clog impeller design
- Single tool servicing
- Extended life motor bearings
- Industrial grade mechanical seal
- Heavy duty 316 stainless steel wet end components
- 3 Year Warranty

Jabsco's Cyclone range of 316 stainless steel centrifugal pumps are the best pumps for engine cooling, closed-circuit circulation systems, livewell circulation, central heating, chemical transfer, calf feeding carts, and other flooded suction applications.

Jabsco offers brushed motors capable of 2,500-3,500 hours along with an anti-clogging impeller which allows small debris to pass through the pump. If servicing or adjustment is necessary, only a 3/8" wrench is needed to remove the impeller to inspect the mechanical seal.



Learn more
at xylem.com

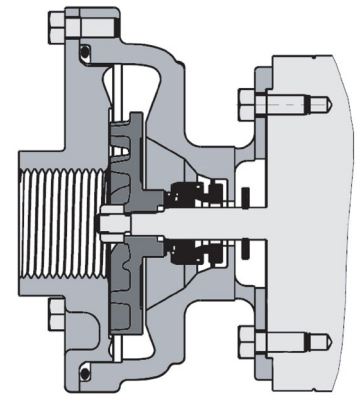


a xylem brand

Cyclone Centrifugal Pumps HEAVY DUTY PUMPS FOR CIRCULATION SOLUTIONS

Features and Benefits

- 6.5' (2m) suction lift with flooded inlet/suction
- 3/4" NPTF or BSPF suction/discharge ports
- Handles seawater, fresh water, anti-freeze, mild chemicals, bilge water
- Accepts fluid temperatures between 39°F (4°C) - 203°F (95°C)
- Various discharge port configurations available
- Carbon and stainless steel mechanical seal
- Silent, vibration free running
- Meets or exceeds CE & ISO 8846 Marine (Ignition Protection)

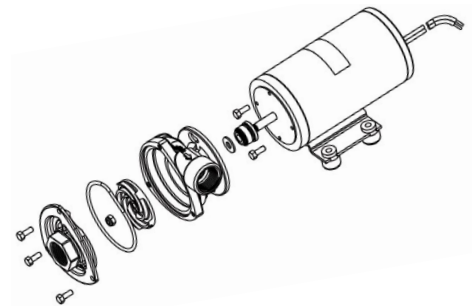


50840 Series

- 29 GPM (110 LPM) max. flow
- 3,500 Hr motor life
- Continuous duty rated motor
- 6.3"L x 4.0"W x 4.4"H

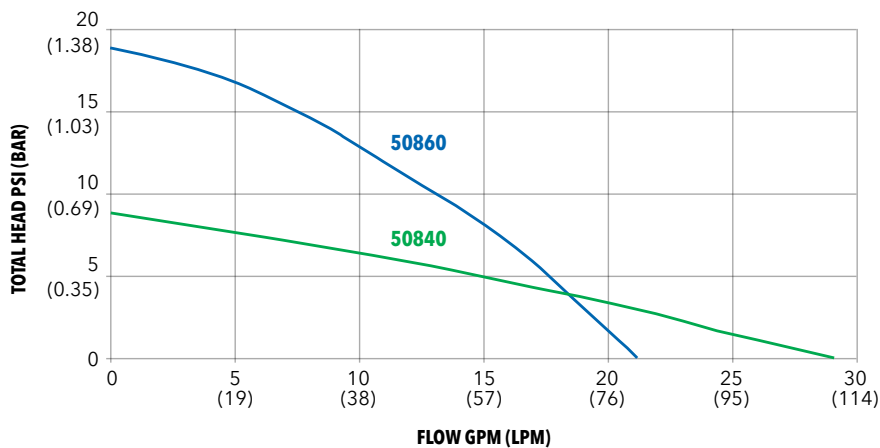
50860 Series

- 21 GPM (80 LPM) max. flow
- 2,500 Hr motor life
- Intermittent duty rated motor (max. 30 minutes on, min. 30 minutes off)
- 8.2"L x 4.0"W x 4.4"H



Performance Curve

Performance Based On Standard Operating Voltage (12.8VDC or 25.6VDC model voltage)



| MODEL | VOLTAGE | PORTS | DISCHARGE |
|------------|---------|-------|-----------|
| 50840-0012 | 12 | NPTF | Right |
| 50840-0212 | 12 | NPTF | Up |
| 50840-2012 | 12 | BSPF | Right |
| 50840-0024 | 24 | NPTF | Right |
| 50840-2024 | 24 | BSPF | Right |
| 50840-2124 | 24 | BSPF | Left |
| 50860-0012 | 12 | NPTF | Right |
| 50860-0112 | 12 | NPTF | Left |
| 50860-2012 | 12 | BSPF | Right |
| 50860-0024 | 24 | NPTF | Right |
| 50860-2024 | 24 | BSPF | Right |



Warranty: All products of the company are sold and all services of the company are offered subject to the company's warranty and terms and conditions of sale, copies of which will be furnished upon request. The information provided herein is for guidance only, it does not constitute a guarantee of the performance or specification of any individual product or component.

www.xylem.com/jabsco

USA
Xylem Inc.
100 Cummings Center
Suite 535N Beverly MA, 01915
Tel: (978) 281-0440
Fax: (978) 283-2619

UK
Xylem Inc.
Bingley Road, Hoddesdon
Hertfordshire EN11 0BU
Tel: +44 (0) 1992 450145
Fax: +44 (0) 1992 467132

GERMANY
Xylem Inc.
Oststrasse 28
22844 Norderstedt
Tel: +49-40-53 53 73-0
Fax: +49-40-53 53 73-11

PHILIPPINES
Xylem Inc.
12 Ring Road, LISP II
Brgy. Lamesa, Calamba City 4027
Tel: 63 (49) 5434341
Fax: 63 (49) 5456817

CHINA
Xylem Inc.
30/F Tower A, 100 Zunyi Road
Shanghai, China 200051
Tel: +86-21-2208-2888
Fax: +86-21-2208-2999

ITALY
Xylem Inc.
Via Tommaseo, 6 20059
Vimercate, Milano
Tel: +39 039 685 2323
Fax: +39 039 666 307