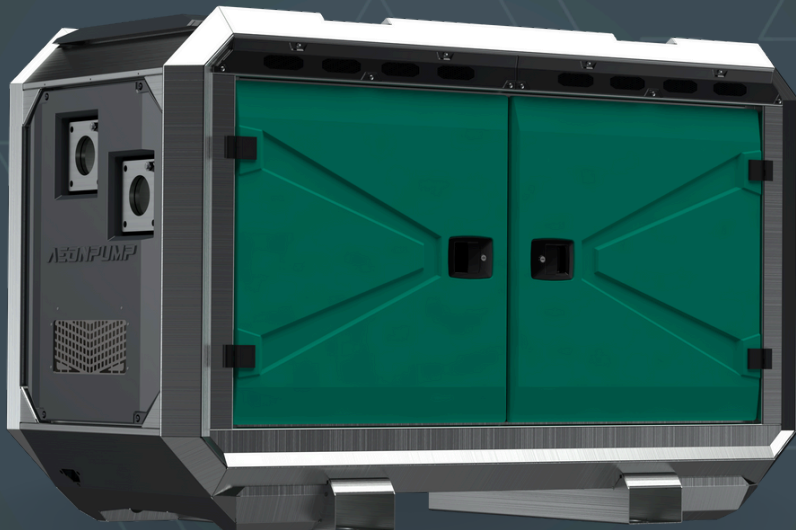


AEDONPUMP

KRAKEN 4D



DIESEL

**DRIVEN WELLPOINT
DEWATERING PUMP**



FEATURES AND COMPETITIVE EDGE

Type: **Kraken 4D**
Connection size: **4"**

Frame LxWxH: **2300x1000x1400 mm**
(90.55x39.37x55.12")

Dry weight: **1500 kg (3306.93 lbs)**

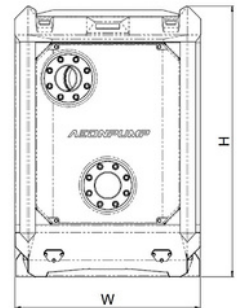
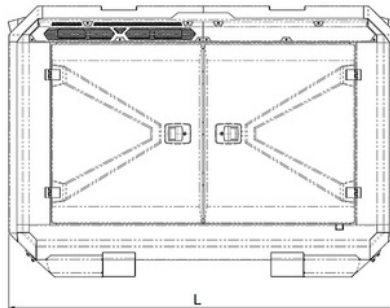
Fuel tank capacity: **200 L (52.83 US gallons)**

Sound level: **48 dB (at 10 m/ at 32.8 feet)**

Fuel consumption: **1 l/h (0.264 US gallons/h)**

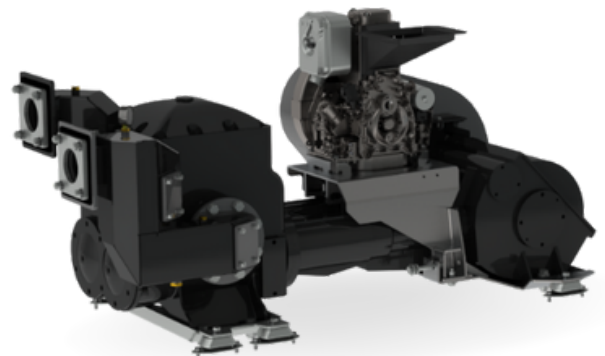
Designed for heavy duty applications in Wellpoint dewatering:

- Extended maintenance intervals;
- High-grade parts of superior quality;
- Online telemetry and remote access capability;
- Unsurpassed efficiency values that set the industry standard.



PUMP TECHNICAL SPECIFICATION

Pump Pump type: **Piston pump**
Max. flow: **95 m³/h (418 gpm)**
Max. pressure: **20 m (65.62 feet)**
Max. Suction: **9.6 m (31.50 feet)**
Connection size: **4"**
Pump body: **Alloyed cast iron**
Cylinder liners: **Stainless**
Piston cups: **Leather**
Piston rods: **Stainless steel**
Shaft seal: **Gland packing**
Valve material: **Ruber**
Stone catcher: **Galvanized steel**





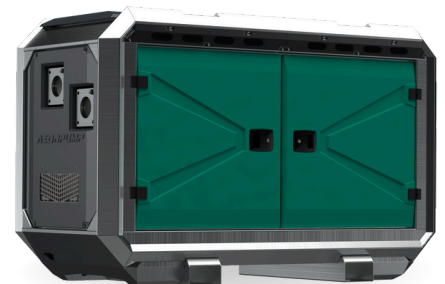
ENGINE

Standard Model: **Hatz 1D81**
Emission standard: **Stage V**
Cylinders: **1**
Displacement: **0.667 L (40.7 cu.in.)**
Bore and stroke: **100 x 85 mm (3.94x3.35")**
Maximum power: **5.5 kW (7.38 hp) @1500 rpm**
Variable speed: **1500 - 1700 rpm**
Combustion system: **High Pressure Mechanical Direct Injection**



FRAME

Silent canopy Frame or canopy: **Stackable**
Material: **Hot dip galvanized Steel**
Dimensions LxWxH: **2300x1000x1400 mm (90.55x39.37x55.12")**
Lifting point: **Single lifting point**
Forklift pockets: **Forklift pockets**



CONTROL PANEL OPTIONS

Retro Ignition switch
Hour meter
Oil pressure indicator
Battery indicator
Light Assistant*

* Optional

