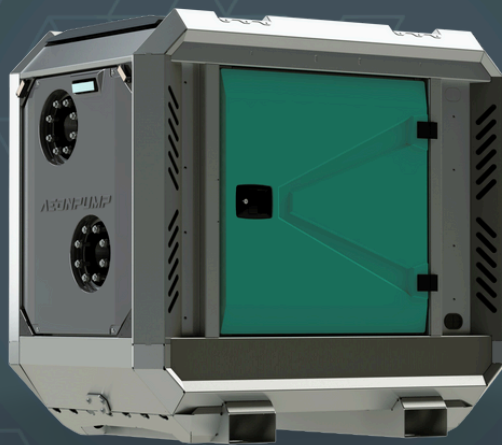


**AEDONPUMP**

# RAPTOR 4D



**DIESEL**

**DRIVEN SEWAGE  
AND DEWATERING PUMP**

## FEATURES AND COMPETITIVE EDGE

Type: **Raptor 4D**  
Connection size: **4"**

Frame LxWxH: **1634x990x1482 mm**  
**(64.3x39x58.3")**

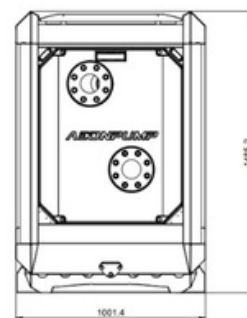
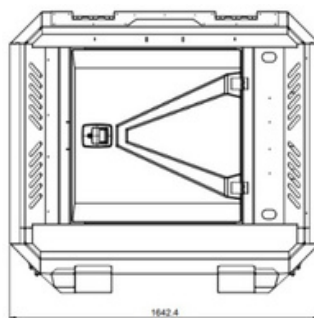
Dry weight: **880 kg (1940 lbs)**

Fuel tank capacity: **200 L (52.83 US gallons)**

Sound level: **54dB (at 10 m/at 32.8 feet)**

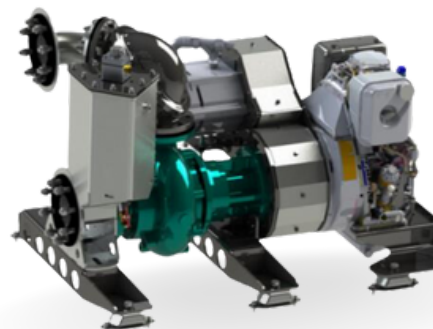
**Designed for heavy duty applications.**  
**Sewage bypass, drainage and dewatering:**

- Extended maintenance intervals;
- High-grade parts of superior quality;
- Online telemetry and remote access capability;
- Unsurpassed efficiency values that set the industry standard.



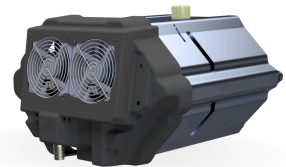
## PUMP TECHNICAL SPECIFICATION

**Pump** Max. flow: **190 m<sup>3</sup>/h (836 gpm)**  
Max. pressure: **19 m (62 feet)**  
Impeller type: **Screw impeller**  
Solids handling: **75 mm (2.95")**  
Temperature: **max. 40°C (max 104°F)**  
Casing: **GG25 (0.6025)**  
Impeller: **GGG60 (0.7060)**  
Suction Liner: **GG20 (0.6020)**  
Suction liner adjustable by external regulation screws  
Wear Ring: **GG20 (0.6020)**  
Shaft: **1.4021**  
Shaft Sealing: **WC/SiC/NBR**  
O-Rings: **NBR**





**Priming System** Pump type: **dry claw vacuum pump**  
Air handling capacity: **60 m<sup>3</sup>/h (35 CFM)**  
Max. vacuum: **9.0 m (29.5 feet)**  
Floatbox: **Hot dip galvanized Steel**  
Non-return valve: **Ductile iron GJS400**  
Check valve ball: **Rubber NBR**



## ENGINE OPTIONS

**Standard** Model: **Hatz 1D90E**  
Emission standard: **Stage V/ Tier 4f**  
Cylinders: **1**  
Displacement: **0.722 L (44.06 cu.in.)**  
Bore and stroke: **104 x 85 mm (4.09 x 3.35")**  
Maximum power: **5.7 kW (7.64 hp) @1600 rpm**  
Variable speed: **1500 - 1600 rpm**  
Combustion system: **High Pressure Mechanical Direct Injection**

---



**Retro** Model: **Hatz 1D81**  
Emission standard: **Stage V/ Tier 4f**  
Cylinders: **1**  
Displacement: **0.667 (40.7 cu.in.)**  
Bore and stroke mm: **100 x 85 (3.94 x 3.35")**  
Maximum power: **5.7 kW (7.64 hp) @1600 rpm**  
Variable speed: **1500 - 1600 rpm**  
Combustion system: **High Pressure Mechanical Direct Injection**



### FRAME OPTIONS

**Silent canopy** Canopy type: **Stackable**  
Material: **Hot dip galvanized Steel**  
Dimensions LxWxH: **1634x990x1482 mm (64.3x39x58.3")**  
Lifting point: **Single lifting point**  
Forklift pockets: **Installed**

---



**Open canopy** Canopy type: **Stackable**  
Material: **Hot dip galvanized Steel**  
Dimensions LxWxH: **1634x990x1482 mm (64.3x39x58.3")**  
Lifting point: **Single lifting point**  
Forklift pockets: **Installed**



### CONTROL PANEL OPTIONS

**Standard** AEONPUMP Software  
Automatic level control  
Hydrostatic level sensor\*  
SMS alarm system\*  
Online telemetry\*  
Dual float switch  
Light Assistant\*

\* Optional

---

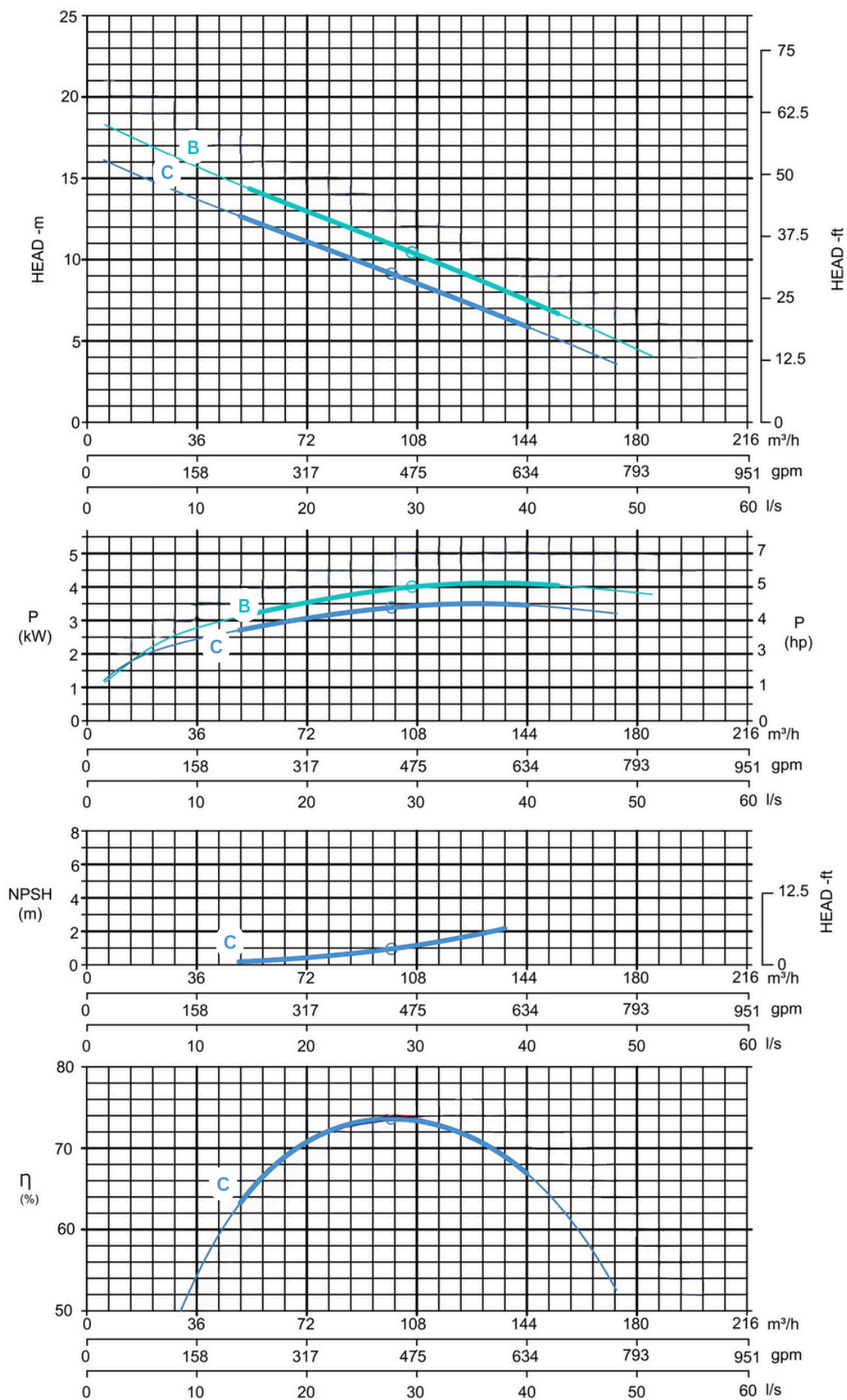


**Retro** Ignition switch  
Hour meter  
Oil pressure indicator  
Battery indicator  
Dual float switch  
Light Assistant\*

\* Optional



### Curves at Speeds: B 1600 rpm C 1500 rpm



Note: Pump power P include mechanical seal friction and bearing frame losses, from a run in bearing frame.  
(Testing according ISO 9906:2012-38)