

**AEDONPUMP**

# RAPTOR 4D HEAVY



**DIESEL**

**DRIVEN SEWAGE  
AND DEWATERING PUMP**

## FEATURES AND COMPETITIVE EDGE

Type: **Raptor 4D Heavy**  
 Connection size: **4"/6"**

Frame LxWxH: **2300x1000x1400mm**  
**(90.6x39.4x55.1")**

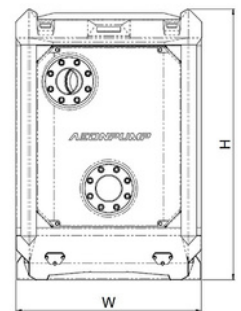
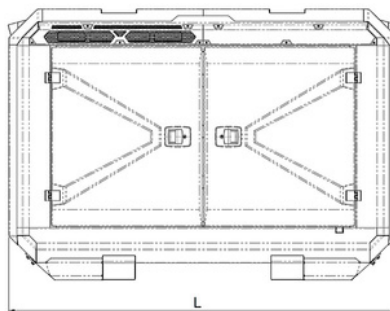
Dry weight: **1200 kg (2645.5 lbs)**

Fuel tank capacity: **200 L (52.8 US gallon)**

Sound level: **48dB (at 10 m/at 32.8 feet)**

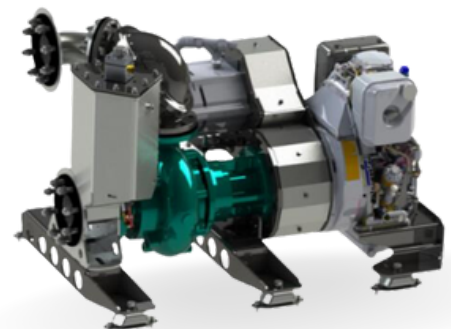
**Designed for heavy duty applications.**  
**Sewage bypass, drainage and dewatering:**

- Extended maintenance intervals;
- High-grade parts of superior quality;
- Online telemetry and remote access capability;
- Unsurpassed efficiency values that set the industry standard.



## PUMP TECHNICAL SPECIFICATION

**Pump** Max. flow: **245 m<sup>3</sup>/h (1078 gpm)**  
 Max. pressure: **35 m (114.8 feet)**  
 Impeller type: **Screw impeller**  
 Solids handling: **100 mm (4")**  
 Temperature: **max. 40°C (max 104°F)**  
 Casing: **GG25 (0.6025)**  
 Impeller: **GGG60 (0.7060)**  
 Suction Liner: **GG20 (0.6020)**  
 Suction liner adjustable by external regulation screws  
 Wear Ring: **GG20 (0.6020)**  
 Shaft: **1.4021**  
 Shaft Sealing: **WC/SiC/NBR**  
 O-Rings: **NBR**





**Priming System** Pump type: **dry claw vacuum pump**  
Air handling capacity: **60 m<sup>3</sup>/h (35 CFM)**  
Max. vacuum: **9.0 m (29.5 feet)**  
Floatbox: **Hot dip galvanized Steel**  
Non-return valve: **Ductile iron GJS400**  
Check valve ball: **Rubber NBR**



## ENGINE OPTIONS

**Standard** Model: **Hatz 4H50N**  
Emission standard: **Stage V/ Tier 4f**  
Cylinders: **4**  
Displacement litres: **1.952 L (119.1 cu. in.)**  
Bore and stroke mm: **84 x 88 mm (3.31x3.46")**  
Maximum power: **18.4 kW (24.7 hp) @1500 rpm**  
Variable speed: **1500 - 2100 rpm**  
Combustion system: **Direct injection with Bosch off-highway common-rail system**



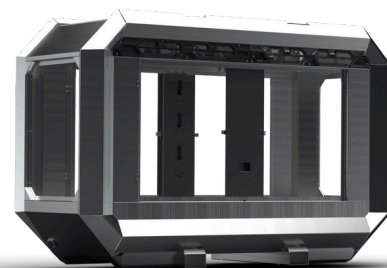
## FRAME OPTIONS

**Silent canopy** Canopy type: **Stackable**  
Material: **Hot dip galvanized Steel**  
Dimensions LxWxH: **1634x990x1482 mm (64.3x40x58.3")**  
Lifting point: **Single lifting point**  
Forklift pockets: **Installed**

---



**Open canopy** Canopy type: **Stackable**  
Material: **Hot dip galvanized Steel**  
Dimensions LxWxH: **1634x990x1482 mm (64.3x40x58.3")**  
Lifting point: **Single lifting point**  
Forklift pockets: **Installed**



## CONTROL PANEL OPTIONS

**Standard** AEONPUMP Software  
Automatic level control  
Hydrostatic level sensor\*  
SMS alarm system\*  
Online telemetry\*  
Dual float switch  
Light Assistant\*

\* Optional



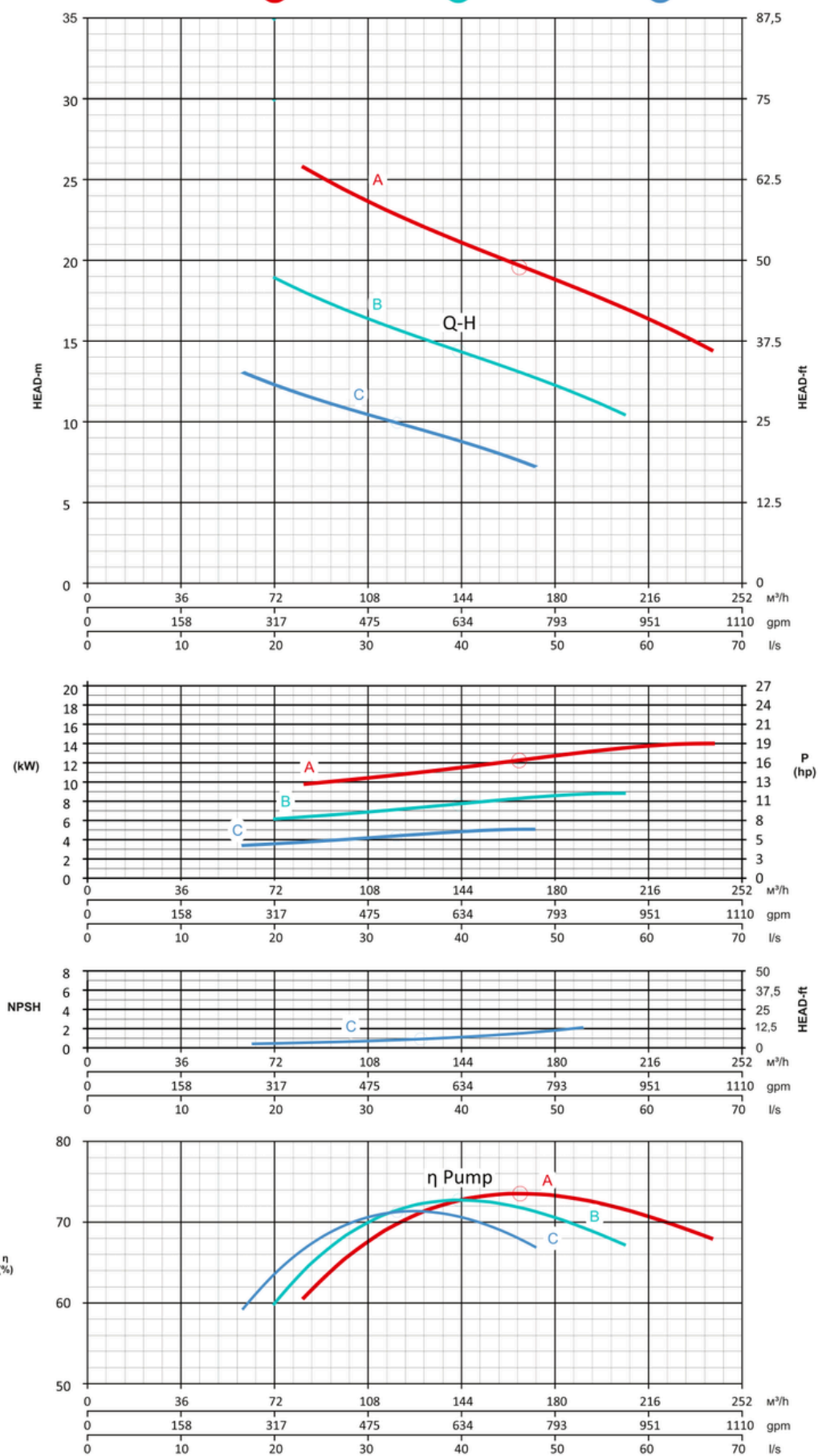


Curves at Speeds:

**A** 2100 rpm

**B** 1800 rpm

**C** 1500 rpm



Note: Pump power P include mechanical seal friction and bearing frame losses, from a run in bearing frame.  
(Testing according ISO 9906:2012-38)