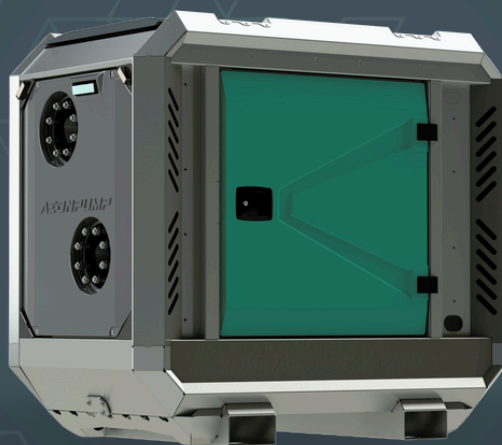


AEDONPUMP

RAPTOR 4E



ELECTRICALLY

**DRIVEN SEWAGE
AND DEWATERING PUMP**



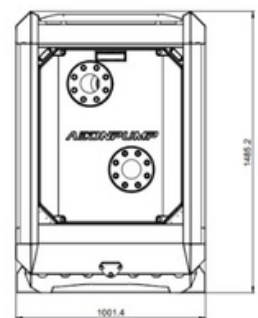
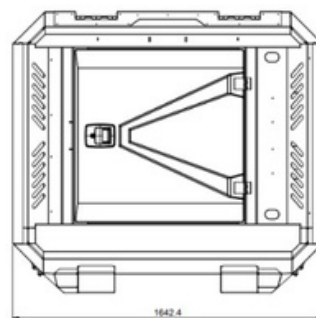
FEATURES AND COMPETITIVE EDGE

Type: **RAPTOR 4E**
Connection size: **4"**

Frame LxWxH: **1634x990x1482 mm**
(64.3x39x58.3")
Dry weight: **900 kg (1984.16 lbs)**

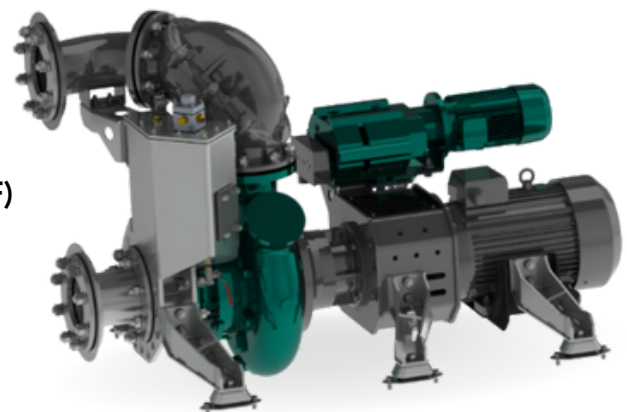
Designed for heavy duty applications.
Sewage bypass, drainage and dewatering:

- Extended maintenance intervals;
- High-grade parts of superior quality;
- Online telemetry and remote access capability;
- Unsurpassed efficiency values that set the industry standard.



PUMP TECHNICAL SPECIFICATION

Pump Max. flow: **145 m³/h (638 gpm)**
Max. pressure: **15 m (49.21 feet)**
Impeller type: **Screw impeller**
Solids handling: **75 mm (2.95")**
Temperature: **max. 40°C (max 104°F)**
Wear Ring: **GG20 (0.6020)**
Shaft: **1.4021**
Shaft Sealing: **WC/SiC/NBR**
O-Rings: **NBR**
Casing: **GG25 (0.6025)**
Impeller: **GGG60 (0.7060)**
Suction Liner: **GG20 (0.6020)**
Suction liner adjustable by external regulation screws.





Electric Motor Power: **5.5 kW (7.38 hp)**
Rated Voltage: **400/690V 50/60 Hz**
Rotation speed: **1438 rpm**
Standard: **EC Directive 2005/32**



Priming System Pump type: **dry claw vacuum pump**
Air handling capacity: **60 m3/h (35 CFM)**
Max. vacuum: **9.0 m (29.5 feet)**
Electric motor: **1.3 kW (1.74 hp)**
Floatbox: **Hot dip galvanized Steel**
Non-return valve: **Ductile iron GJS400**
Check valve ball: **Rubber NBR**



ELECTRICAL MOTOR CONTROLLER OPTIONS

Standard Frequency converter

AEONPUMP Software
Automatic level control
Two float switch
Hydrostatic level sensor *
SMS alarm system *
Online telemetry *

*Optional



Retro Star Delta

Dual float switches
Phase control
Hour meter
Socket 32 A





FRAME OPTIONS

Silent Canopy Canopy type: **Stackable**
Material: **Hot dip galvanized steel**
Dimensions LxWxH: **1634x990x1482 mm (64.3x39x58.3")**
Lifting point: **Single lifting point**
Forklift pockets: **Installed**



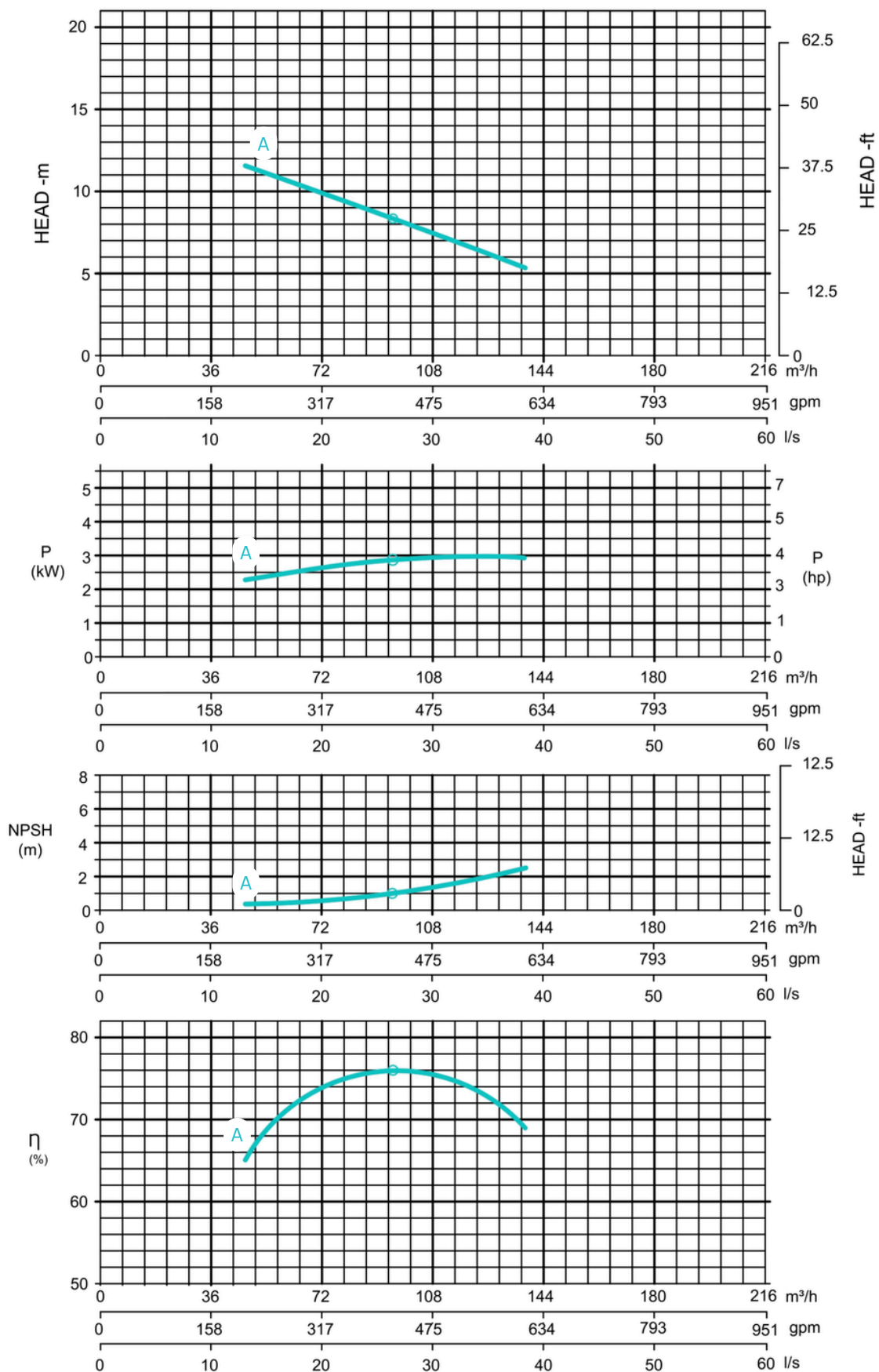
Open Canopy Canopy type: **Stackable**
Material: **Hot dip galvanized steel**
Dimensions LxWxH: **1634x990x1482 mm (64.3x39x58.3")**
Lifting point: **Single lifting point**
Forklift pockets: **Installed**



Curves at Speeds:

A

1438 rpm



Note: Pump power P include mechanical seal friction and bearing frame losses, from a run in bearing frame.
(Testing according ISO 9906:2012-38)