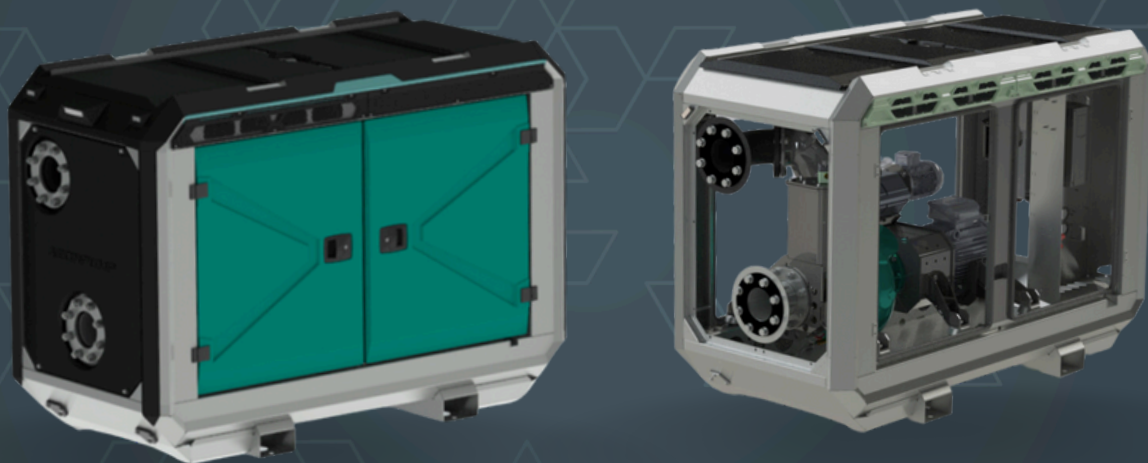


AEDONPUMP

RAPTOR 6E



ELECTRICALLY

**DRIVEN SEWAGE
AND DEWATERING PUMP**

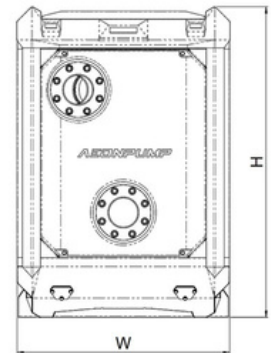
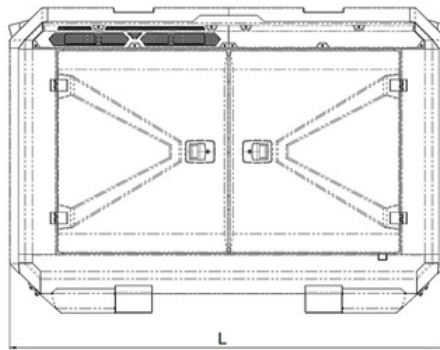
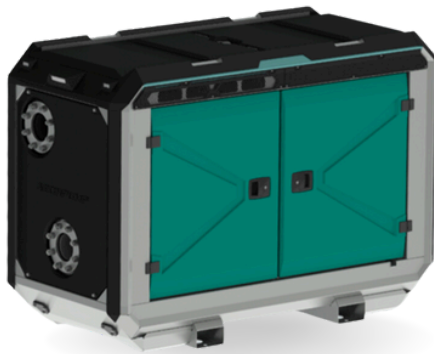
FEATURES AND COMPETITIVE EDGE

Type: **RAPTOR 6E**
Connection size: **6"**

Frame LxWxH: **2299x1100x1601 mm**
(90.51x43.31x63.03")
Dry weight: **1150 kg (2535.32 lbs)**

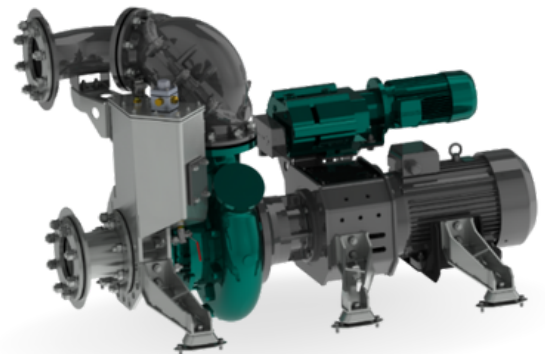
Designed for heavy duty applications.
Sewage bypass, drainage and dewatering:

- Extended maintenance intervals;
- High-grade parts of superior quality;
- Online telemetry and remote access capability;
- Unsurpassed efficiency values that set the industry standard.



PUMP TECHNICAL SPECIFICATION

Pump Pump type: **E06R-HMN1R**
Max. flow: **380 m³/h (1672 gpm)**
Max. pressure: **26 m (85.3 feet)**
Impeller type: **Screw impeller**
Solids handling: **100 mm (3.94")**
Temperature: **max. 40 °C (max 104°F)**
Wear Ring: **GG20 (0.6020)**
Shaft: **1.4021**
Shaft Sealing: **WC/SiC/NBR**
O-Rings: **NBR**
Casing: **GG25 (0.6025)**
Impeller: **GGG60 (0.7060)**
SuctionLiner: **GG20 (0.6020)**
Suction liner adjustable by external regulation screws.

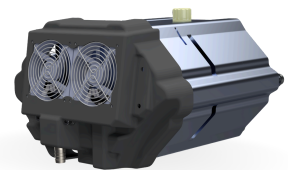




Electrical Motor Power: **15 kW (20.12 hp)**
Rated Voltage: **400/690V 50/60 Hz**
4-pole: **1474 RPM**



Priming System Pump type: **dry claw vacuum pump**
Air handling capacity: **60 m3/h (35 CFM)**
Max. vacuum: **9.0 m (29.5 feet)**
Electric motor: **1.3 kW (1.74 hp)**
Floatbox: **Hot dip galvanized Steel**
Non-return valve: **Ductile iron GJS400**
Check valve ball: **Rubber NBR**



ELECTRICAL MOTOR CONTROLLER OPTIONS

Standard Frequency converter

AEONPUMP Software
Automatic level control
Dual float switch
Hydrostatic level sensor *
SMS alarm system *
Online telemetry *

*Optional



Retro Star Delta

Dual float switch
Phase control
Hour meter
Socket 32 A





FRAME OPTIONS

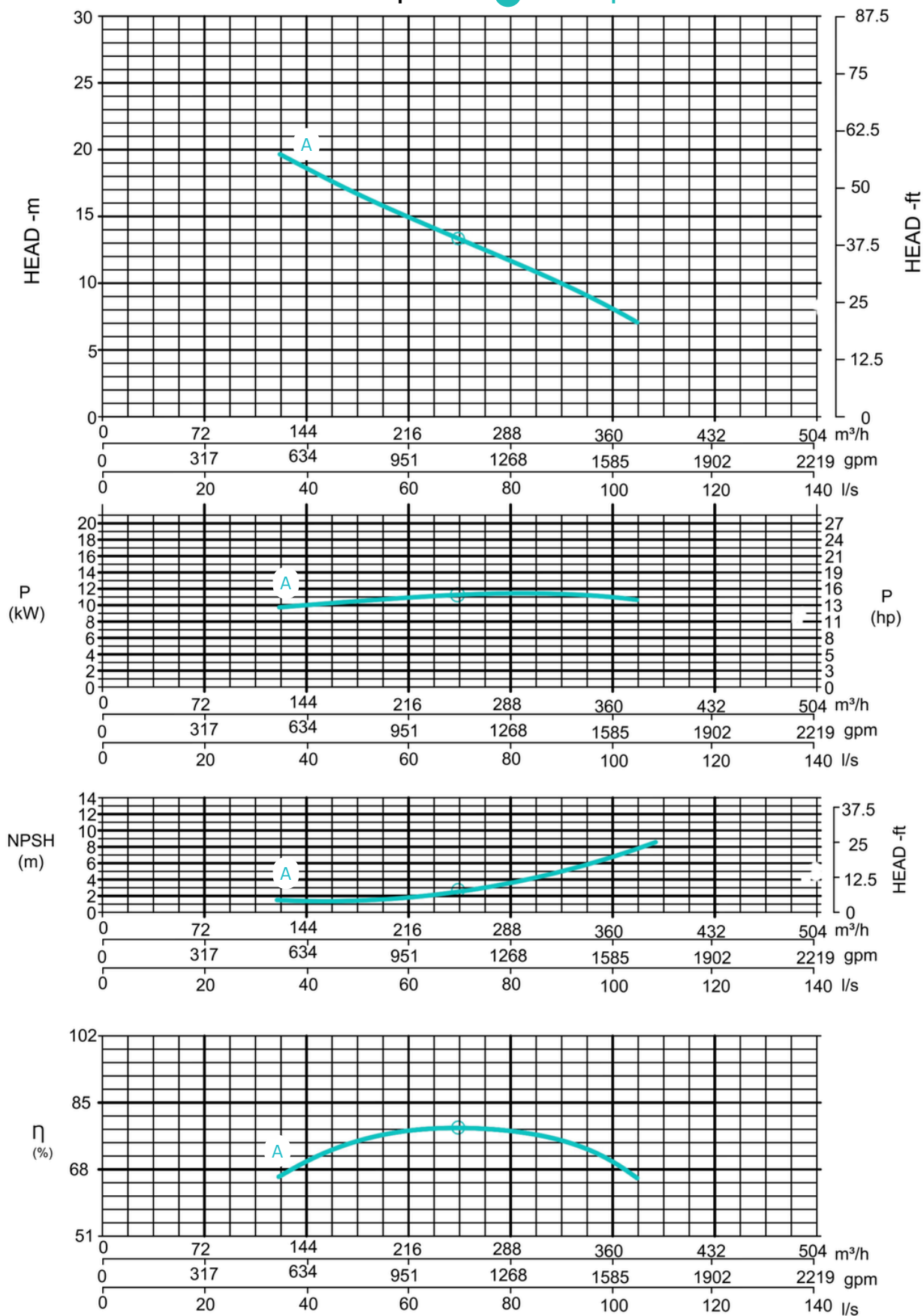
Silent Canopy Canopy type: **Stackable**
Material: **Hot dip galvanized steel**
Dimensions LxWxH: **2299x1100x1601 mm**
(**90.51x43.31x63.03"**)
Lifting point: **Single lifting point**
Forklift pockets: **Installed**



Open Canopy Canopy type: **Stackable**
Material: **Hot dip galvanized steel**
Dimensions LxWxH: **2299x1100x1601 mm**
(**90.51x43.31x63.03"**)
Lifting point: **Single lifting point**
Forklift pockets: **Installed**



Curves at Speeds: **A 1474 rpm**



Note: Pump power P include mechanical seal friction and bearing frame losses, from a run in bearing frame.
(Testing according ISO 9906:2012-38)